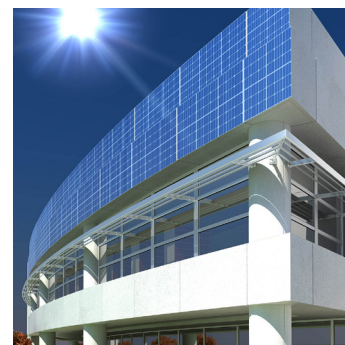
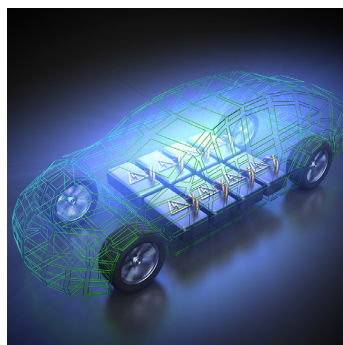


## 2 kWh LI-ION BATTERY - TYPE R (200 A)

STANDARD ENERGY-MODULE  
SCALABLE, SAFE, TURN-KEY READY



-  **Dust- and Water Protection: IP 66**
-  **Modular and scalable Configuration**
-  **Robust Metal Housing**
-  **Recycle- and Reusable**
-  **Fast Charging Capable**
-  **Safety: Integrated BMS**
-  **Operational Temperature: -20°C to +60°C**
-  **Plug & Play: Communication - CANbus**
-  **360° Mechanical Integration**
-  **Made in Germany**

Technical Information	12 Vdc - R	24 Vdc - R	48 Vdc - R
<b>Type</b>	A12020R	A24020R	A48020R
<b>Module-Capacity</b>	139 Ah	81,2 Ah	40,6 Ah
<b>Module-Energy</b>	2004 Wh	2046 Wh	2046 Wh
<b>Discharge Constant Power Max.</b>	2.400 W @ 200 A	4.800 W @ 200 A	9.600 W @ 200 A
<b>Nominal Voltage</b>	14,4 Vdc	25,2 Vdc	50,4 Vdc
<b>Operational Voltage</b>	12 Vdc <=> 16 Vdc	21 Vdc <=> 28 Vdc	42 Vdc <=> 56 Vdc
<b>Energy Density</b>	120,4 Wh/kg		
<b>Cell Chemistry</b>	Lithium-Ionen – Li-NMC – 3,6 V DC – 2,9 Ah		
<b>Dimensions (L x W x H)</b>	442,5 mm x 310 mm x 115 mm		
<b>Housing</b>	Aluminium Die Cast		
<b>Temperature Range</b>	-20 °C to +60 °C – Discharge / 0 °C to +50 °C – Charge		
<b>Water / Dust Protection</b>	IP 66		
<b>Humidity / Operational Elevation</b>	5 to 95 % / < 4.000 m		
<b>Configuration / Communication</b>	parallel / CANbus		
<b>Safety Detection</b>	BMS - Module and cell series monitoring		
<b>Functions</b>	Overcharge- / Deep Discharge- Protection, Temperature monitoring, Passive Balancing (150 mA), Heating (Optional)		
<b>Weight</b>	Approx. 22 kg		
<b>Cycle-Life</b>	Approx. 3.000 cycles with 80 % discharge depth at +20 °C		
<b>Certificates and Standards</b>	UN 38,3, CE, RoHS, UL94 V0, DNV-GL, IEC 62619, IEC 62620, UN-ECE-R10, EN 61000-6-2:2005, EN 61000-6-3:2007, IEC-62133		