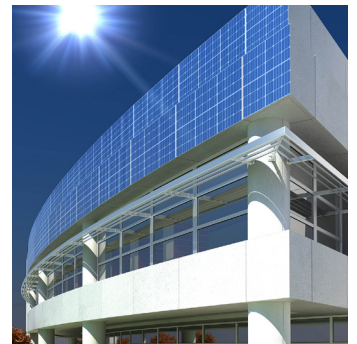
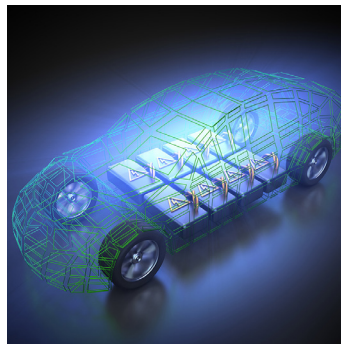




## 2 kWh LI-ION BATTERY - TYPE R (200 A)

STANDARD ENERGY-MODULE

SCALABLE, SAFE, TURN-KEY READY



Dust- and Water Protection: IP 66



Modular and scalable Configuration



Robust Metal Housing



Recycle- and Reusable



Fast Charging Capable



Safety: Integrated BMS



Operational Temperature: -20°C to +60°C



Plug & Play: Communication - CANbus



360° Mechanical Integration



Made in Germany

Technical Information	12 Vdc - R	24 Vdc - R	48 Vdc - R
Type	A12020R	A24020R	A48020R
Module-Capacity	139 Ah	81,2 Ah	40,6 Ah
Module-Energy	2004 Wh	2046 Wh	2046 Wh
Discharge Constant Power Max.	2.400 W @ 200 A	4.800 W @ 200 A	9.600 W @ 200 A
Nominal Voltage	14,4 Vdc	25,2 Vdc	50,4 Vdc
Operational Voltage	12 Vdc <=> 16 Vdc	21 Vdc <=> 28 Vdc	42 Vdc <=> 56 Vdc
Energy Density	120,4 Wh/kg		
Cell Chemistry	Lithium-Ionen – Li-NMC – 3,6 V DC – 2,9 Ah		
Dimensions (L x W x H)	442,5 mm x 310 mm x 115 mm		
Housing	Aluminium Die Cast		
Temperature Range	-20 °C to +60 °C – Discharge / 0 °C to +50 °C – Charge		
Water / Dust Protection	IP 66		
Humidity / Operational Elevation	5 to 95 % / < 4.000 m		
Configuration / Communication	parallel / CANbus		
Safety Detection	BMS - Module and cell series monitoring		
Functions	Overcharge-/ Deep Discharge- Protection, Temperature monitoring, Passive Balancing (150 mA), Heating (Optional)		
Weight	Approx. 22 kg		
Cycle-Life	Approx. 3.000 cycles with 80 % discharge depth at +20 °C		
Certificates and Standards	UN 38,3, CE, RoHS, UL 94 VO, DNV-GL, IEC 62619, IEC 62620, IEC 61508, UN-ECE-R10, EN 61000-6-2:2005, EN 61000-6-3:2007, IEC-62133		