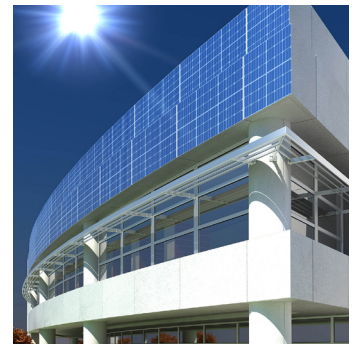
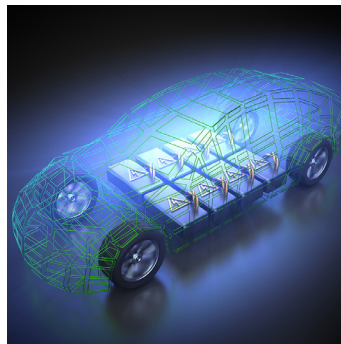




2 kWh LI-ION BATTERY - TYPE M (60 A)

STANDARD ENERGY-MODULE

SCALABLE, SAFE, TURN-KEY READY



- Dust- and Water Protection: IP 66
- Modular and scalable Configuration
- Robust Metal Housing
- Recycle- and Reusable
- Fast Charging Capable
- Safety: Integrated BMS
- Operational Temperature: -20°C to +60°C
- Plug & Play
- 360° Mechanical Integration
- Made in Germany

Technical Information	12 Vdc - M	24 Vdc - M	48 Vdc - M
Type	A12020M	A24020M	A48020M
Module-Capacity	139 Ah	81,2 Ah	40,6 Ah
Module-Energy	2004 Wh	2046 Wh	2046 Wh
Discharge Constant Power Max.	720 W @ 60 A	1.440 W @ 60 A	2.880 W @ 60 A
Nominal Voltage	14,4 Vdc	25,2 Vdc	50,4 Vdc
Operational Voltage	12 Vdc <=> 16 Vdc	21 Vdc <=> 28 Vdc	42 Vdc <=> 56 Vdc
Energy Density	120,4 Wh/kg		
Cell Chemistry	Lithium-Ionen – Li-NMC – 3,6 V DC – 2,9 Ah		
Dimensions (L x W x H)	442,5 mm x 310 mm x 115 mm		
Housing	Aluminium Die Cast		
Temperature Range	-20 °C to +60 °C – Discharge / 0 °C to +50 °C – Charge		
Water / Dust Protection	IP 66		
Humidity / Operational Elevation	5 to 95 % / < 4.000 m		
Configuration	parallel		
Safety Detection	BMS - Module and cell series monitoring		
Functions	Overcharge-/ Deep Discharge- Protection, Temperature monitoring, Passive Balancing (150 mA)		
Weight	Approx. 22 kg		
Cycle-Life	Approx. 3.000 cycles with 80 % discharge depth at +20 °C		
Certificates and Standards	UN 38,3, CE, RoHS, UL 94 VO, EN 61000-6-2:2005, EN 61000-6-3:2007, IEC-62133		