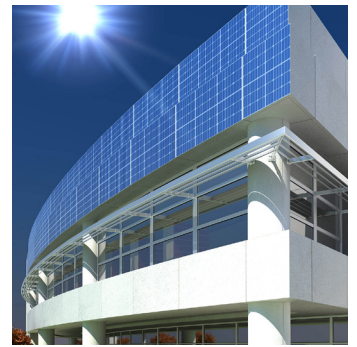
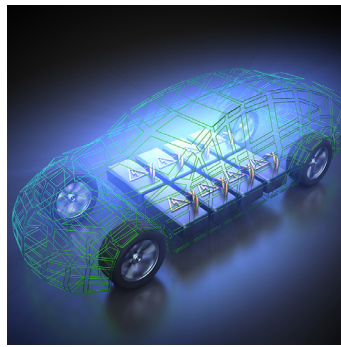




## 10 kWh LI-ION BATTERY - TYPE R (300 A)

STANDARD ENERGY-MODULE

SCALABLE, SAFE, TURN-KEY READY



- Dust- and Water Protection: IP 66
- Modular and scalable Configuration
- Robust Metal Housing
- Recycle- and Reusable
- Fast Charging Capable
- Safety: Integrated BMS
- Operational Temperature: -20°C to +60°C
- Plug & Play: Communication - CANbus
- 360° Mechanical Integration
- Made in Germany

### Technical Information

	24 Vdc - R*	48 Vdc - R
Type	A24100R	A48100R
Module-Capacity	406 Ah	203 Ah
Module-Energy	10.231 Wh	10.231 Wh
Discharge Constant Power Max.	6.000 W @ 300 A	12.000 W @ 300 A
Nominal Voltage	25,2 Vdc	50,4 Vdc
Operational Voltage	21 Vdc <=> 28 Vdc	42 Vdc <=> 56 Vdc
Energy Density	110 Wh/kg	
Cell Chemistry	Lithium-Ionen – Li-NMC – 3,6 V DC – 2,9 Ah	
Dimensions (L x W x H)	1700 mm x 600 mm x 155 mm rail mounting system included	
Housing	2 mm V4A steel	
Temperature Range	-20 °C to +60 °C – Discharge / 0 °C to +50 °C – Charge	
Water / Dust Protection	IP 66	
Humidity / Operational Elevation	5 to 95 % / < 4.000 m	
Configuration / Communication	parallel / CANbus	
Safety Detection	BMS - Module and cell series monitoring	
Functions	Overcharge-/ Deep Discharge- Protection, Temperature monitoring, Passive Balancing (150 mA)	
Weight	Approx. 130 kg	
Cycle-Life	Approx. 3.000 cycles with 80 % discharge depth at +20 °C	
Certificates and Standards	UN 38,3, CE, Rohs, UL 94 VO, DNV-GL, IEC 62619, IEC 62620, IEC 61508, UN-ECE-R10, EN 61000-6-2:2005, EN 61000-6-3:2007, IEC-62133	